

Chapter 6

Human Capital

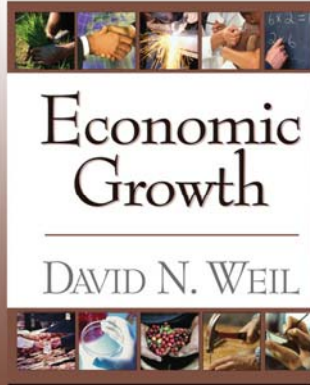
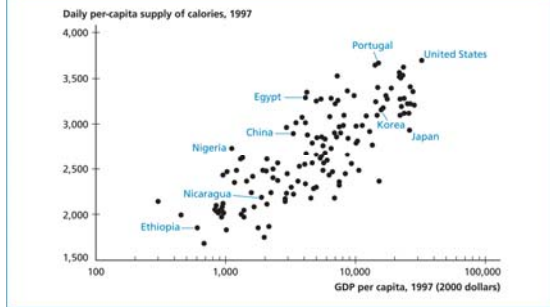


FIGURE 6.1
Nutrition Versus GDP per Capita

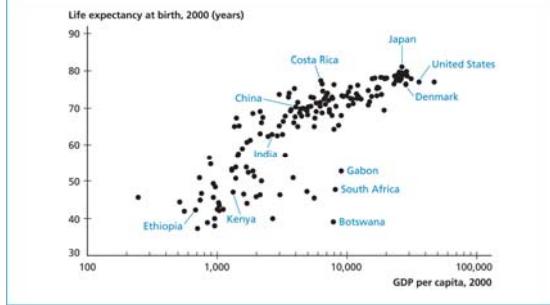


Source: FAOSTAT database, Heston et al. (2002).

Copyright © 2005 Pearson Addison-Wesley. All rights reserved.

6-2

FIGURE 6.2
Life Expectancy Versus GDP per Capita

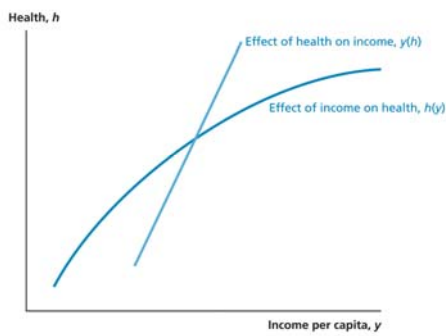


Source: Heston et al. (2002), World Bank (2003b).

Copyright © 2005 Pearson Addison-Wesley. All rights reserved.

6-3

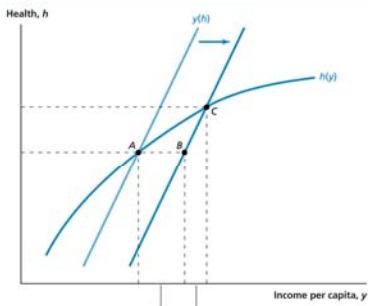
FIGURE 6.3
How Health Interacts with Income



Copyright © 2005 Pearson Addison-Wesley. All rights reserved.

6-4

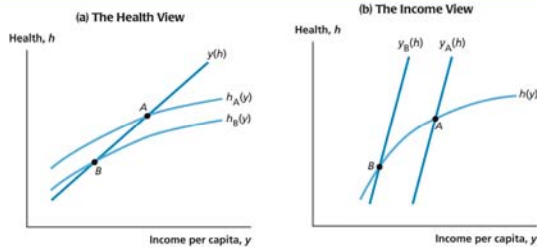
FIGURE 6.4
Effect of an Exogenous Shift in Income



Copyright © 2005 Pearson Addison-Wesley. All rights reserved.

6-5

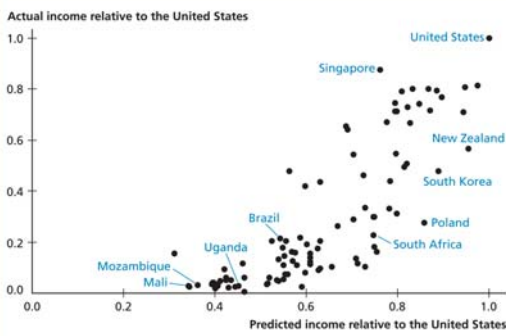
FIGURE 6.5
Health and Income per Capita: Two Views



Copyright © 2005 Pearson Addison-Wesley. All rights reserved.

6-6

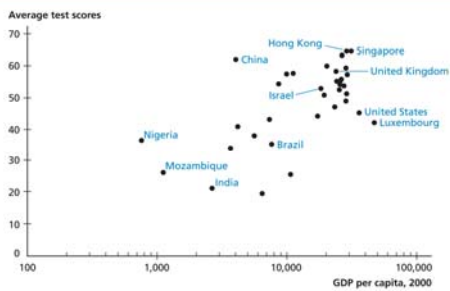
FIGURE 6.12
Predicted Versus Actual Income Relative to the United States



Copyright © 2005 Pearson Addison-Wesley. All rights reserved.

6-13

FIGURE 6.13
Student Test Scores Versus GDP per Capita



Source: Hanushek and Kimko (2000).

Copyright © 2005 Pearson Addison-Wesley. All rights reserved.

6-14

TABLE 6.1
Changes in the Level of Education, 1960–2000

	Average Years of Schooling	Percentage of the Adult Population with				
		No Schooling	Complete Primary Education	Complete Secondary Education	Complete Higher Education	
Developing Countries	1960	2.05	64.1	17.1	2.5	0.4
	2000	5.13	34.4	43.0	14.8	3.0
Advanced Countries	1960	7.06	6.1	72.9	20.2	3.0
	2000	9.76	3.7	84.6	44.7	13.0
United States	1960	8.49	2.0	78.4	31.0	7.0
	2000	12.05	0.8	94.9	68.1	24.5

Source: Barro and Lee (2000). Data are for population aged 15 and over.

Copyright © 2005 Pearson Addison-Wesley. All rights reserved.

6-15

TABLE 6.2

Breakdown of the Population by Schooling and Wages

Highest Level of Education	Years of Schooling	Wage Relative to No Schooling	Percentage of the Population	
			Developing Countries	Advanced Countries
No Schooling	0	1.00	34.4	3.7
Incomplete Primary	4	1.65	22.6	11.7
Complete Primary	8	2.43	11.9	13.4
Incomplete Secondary	10	2.77	16.3	26.5
Complete Secondary	12	3.16	8.3	16.6
Incomplete Higher	14	3.61	3.5	15.1
Complete Higher	16	4.11	3.0	13.0

Source: Barro and Lee (2000).